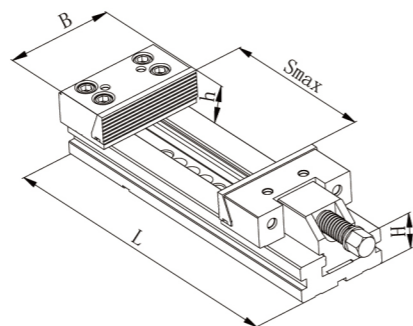
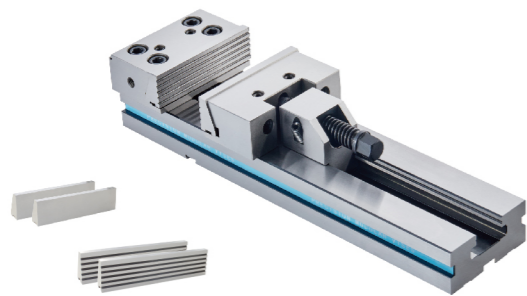
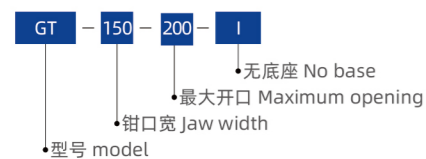



**ZY-00001 精密组合平口钳** PRECISION MODULAR VISE


型号 Model	L (mm)	H (mm)	B (mm)	h (mm)	Smax (mm)
GT 100x100- I	270	35	100	30	100
GT 100x150- I	320				150
GT 125x150- I	345				150
GT 150x200- I	420	40	125	40	200
GT 150x300- I	520				300
GT 150x400- I	620				400
GT 175x200- I	455	58	175	60	200
GT 175x300- I	555				300
GT 175x400- I	655				400
GT 175x500- I	755	70	200	65	500
GT 175x600- I	855				600
GT 200x200- I	495				200
GT 200x300- I	595	78	300	80	300
GT 200x400- I	695				400
GT 200x500- I	795				500
GT 200x600- I	895	78	300	80	600
GT 200x700- I	995				700
GT 300x200- I	535				200
GT 300x300- I	635	78	300	80	300
GT 300x400- I	735				400
GT 300x500- I	835				500
GT 300x600- I	935	78	300	80	600
GT 300x700- I	1035				700
GT 300x800- I	1135				800

## 规格说明:



## 配件 Accessories

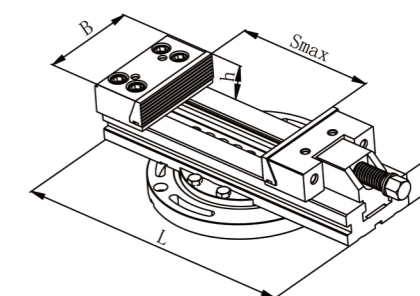
X1	X1	X4	X1	X2

## 特点:

- ◎ 优质合金钢经特殊处理，表面硬度达HRC58~62，具有高耐磨性及高抗拉强度
- ◎ 平行度0.005mm/100mm，垂直度0.005mm
- ◎ 可拆换固定钳口、活动钳口、夹紧快，操作方便
- ◎ 用于加工中心、数控铣床、镗床、平面磨床、龙门铣床等机床
- ◎ 订购时请注明钳口动块要求，平面型或V槽型

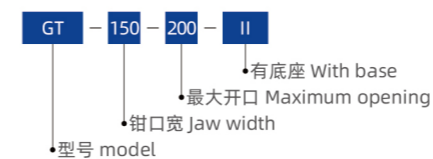
## Features:

- ◎ High quality alloy steel has undergone special treatment, with a surface hardness of HRC58-62, and has high wear resistance and tensile strength
- ◎ Parallelism 0.005mm/100mm, verticality 0.005mm
- ◎ Removable fixed jaws, movable jaws, fast clamping, and convenient operation
- ◎ Used for machining centers, CNC milling machines, boring machines, surface grinders, gantry milling machines, and other machine tools
- ◎ When ordering, please specify the requirements for the jaw moving block, flat or V-groove type


**ZY-00002 带底座精密组合平口钳** PRECISION MODULAR VISE WITH BASE


型号 Model	L (mm)	H (mm)	B (mm)	h (mm)	Smax (mm)
GT 100x100-II	270	35	100	30	100
GT 100x150-II	320				150
GT 125x150-II	345				150
GT 150x200-II	420	40	125	40	200
GT 150x300-II	520				300
GT 150x400-II	620				400
GT 175x200-II	455	58	175	60	200
GT 175x300-II	555				300
GT 175x400-II	655				400
GT 175x500-II	755	70	200	65	500
GT 175x600-II	855				600
GT 200x200-II	495				200
GT 200x300-II	595	78	300	80	300
GT 200x400-II	695				400
GT 200x500-II	795				500
GT 200x600-II	895	78	300	80	600
GT 200x700-II	995				700
GT 300x200-II	535				200
GT 300x300-II	635	78	300	80	300
GT 300x400-II	735				400
GT 300x500-II	835				500
GT 300x600-II	935	78	300	80	600
GT 300x700-II	1035				700
GT 300x800-II	1135				800

## 规格说明:



## 配件 Accessories

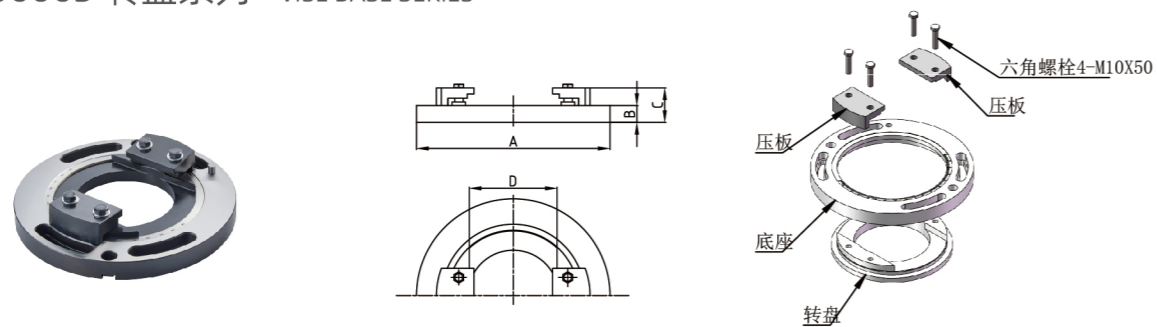
X1	X1	X4	X1	X2

## 特点:

- ◎ 钳体可左右旋转90°
- ◎ 满足不同角度的加工需要
- ◎ 用于加工中心、数控铣床、镗床、平面磨床、龙门铣床等机床

## Features:

- ◎ The clamp body can rotate 90° left and right
- ◎ Meet processing needs at different angles
- ◎ Used for machining centers, CNC milling machines, boring machines, surface grinders, gantry milling machines, and other machine tools


**ZY-00003 转盘系列 VISE BASE SERIES**


型号 Model	A (mm)	B (mm)	C (mm)	D (mm)
GT100	180	20	43.5	75
GT125	226	23	47	95
GT150	290	28	58	125
GT175	320	28	58	145
GT200	370	34	74	170
GT300	400	38	78	195

**ZY-00004 快动式精密组合平口钳 QUICK-ACTION PRECISION MODULAR VISE**


规格说明:

GT - 150 - 200 - III  
 快动式 Quick action type  
 最大开口 Maximum opening  
 钳口宽 Jaw width  
 型号 model

配件 Accessories

定位挡板 work stop with main bolt X1	L型扳手 box wrench X1	压块 vise holding clamp X4	T型扳手 T-wrench X1	定位键 position key block X2

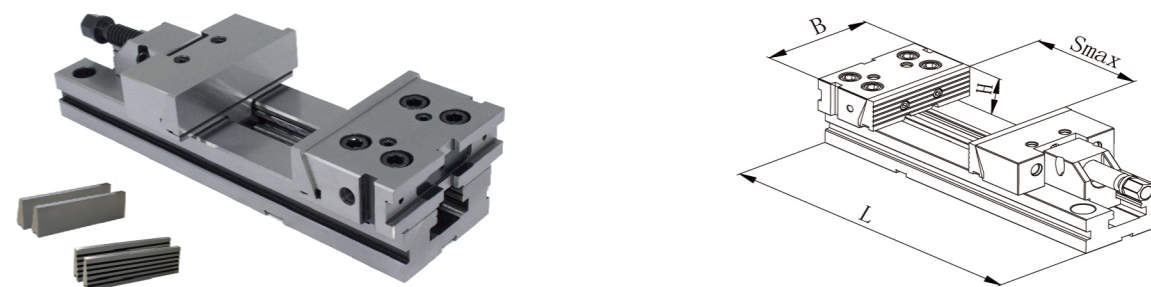
型号 Model	B (mm)	h (mm)	Smax (mm)	L (mm)
GT125x150-III	125	40	150	345
GT150x200-III	150	50	200	420
GT150x300-III	150	50	300	520
GT175x400-III	175	60	400	655

特点:

- ◎ 优质合金钢经特殊处理, 工作表面硬度达HRC58~62, 具有高耐磨性及高抗拉强度
- ◎ 平行度0.005mm/100mm, 垂直度0.005mm
- ◎ 定位销可根据工件的大小, 调整其在钳体上的位置, 实现快速夹紧
- ◎ 用于加工中心、数控铣床、镗床、平面磨床、龙门铣床等机床

Features:

- ◎ High quality alloy steel has undergone special treatment, with a working surface hardness of HRC58-62, and has high wear resistance and tensile strength
- ◎ Parallelness 0.005mm/100mm, verticality 0.005mm
- ◎ The positioning pin can adjust its position on the clamp body according to the size of the workpiece, achieving fast clamping
- ◎ Used in machining centers, CNC milling machines, boring machines, surface grinders, gantry milling machines and other machine tools

**ZY-00005 ZQ80型立卧组合平口钳 ZQ80 TYPE VERTICAL AND HORIZONTAL PRECISION MODULAR VISE**


型号 Model	B (mm)	H (mm)	Smax (mm)	L (mm)
ZQ80100x100	100	30	100	270
ZQ80125x150	125	40	150	345
ZQ80150x200	150	50	200	420
ZQ80150x300			300	520
ZQ80175x200	175	60	200	455
ZQ80175x300			300	555
ZQ80175x400			400	655
ZQ80175x500	200	65	500	755
ZQ80200x200			200	495
ZQ80200x300			300	595
ZQ80200x400			400	695
ZQ80200x500	600	65	500	795
ZQ80200x600			600	895

规格说明:

ZQ80 - 150 X 200  
 最大开口 Maximum opening  
 钳口宽 Jaw width  
 型号 model

配件 Accessories

定位挡板 work stop with main bolt X1	L型扳手 box wrench X1	压块 vise holding clamp X4	T型扳手 T-wrench X1	定位键 position key block X2

特点:

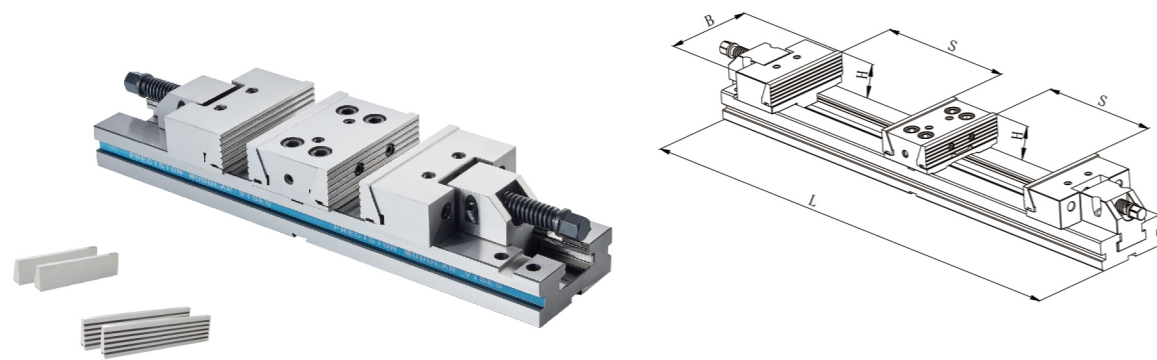
- ◎ 工作表面硬度达HRC58-62, 具有高耐磨性及高抗拉强度
- ◎ 平行度0.005mm/100mm, 垂直度0.005mm
- ◎ 立卧两用
- ◎ 用于加工中心、数控铣床、镗床、平面磨床、龙门铣床等机床

Features:

- ◎ The working surface hardness reaches HRC58-62, with high wear resistance and high tensile strength
- ◎ Parallelness 0.005mm/100mm, verticality 0.005mm
- ◎ Suitable for both vertical and horizontal
- ◎ Used in machining centers, CNC milling machines, boring machines, surface grinders, gantry milling machines and other machine tools

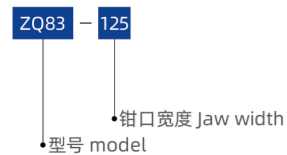


## ZY-00006-I ZQ83型单、双向组合平口钳 SINGLE&amp;DOUBLE ACTION VISES



型号 Model	S (mm)	B (mm)	H (mm)	L (mm)
ZQ83100	2X90	100	30	460
ZQ83125	2X100	125	40	520
ZQ83150	2X110	150	50	580
ZQ83150A	2X160			680
ZQ83175	2X120	175	60	666
ZQ83175A	2X170			766
ZQ83175B	2X220			866
ZQ83175C	2X270			966
ZQ83200	2X150	200	65	805
ZQ83200A	2X200			905
ZQ83200B	2X250			1005
ZQ83200C	2X300			1105
ZQ83200D	2X350			1205

## 规格说明:



## 配件 Accessories



## 特点:

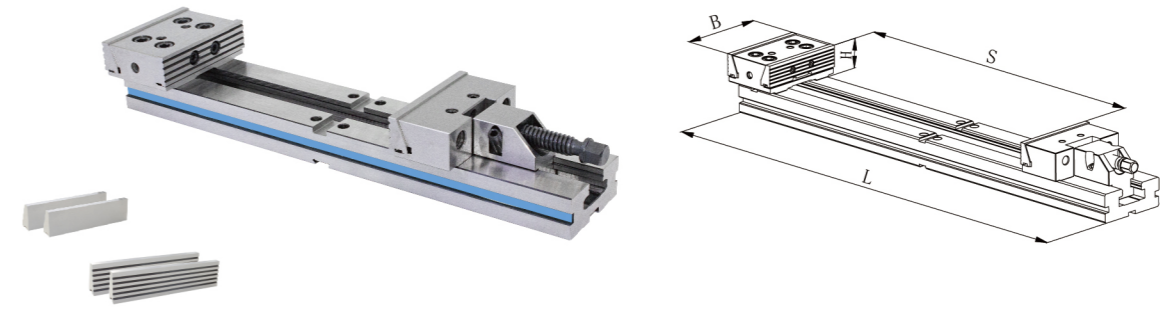
- ◎ 优质合金钢经特殊处理，工作表面硬度达HRC58~62，具有高耐磨性及高抗拉强度
- ◎ 平行度0.005mm/100mm,垂直度0.005mm
- ◎ 可作单向钳用，也可作双向钳用，作单向钳时具有超长的开口度
- ◎ 用于加工中心、数控铣床、镗床、平面磨床、龙门铣床等机床

## Features:

- ◎ High-quality alloy steel has been specially treated, with a working surface hardness of HRC58~62, high wear resistance and high tensile strength
- ◎ Parallelism 0.005mm/100mm, verticality 0.005mm
- ◎ Can be used as one-way pliers or two-way pliers. When used as one-way pliers, it has an extra long opening
- ◎ Used in machining centers, CNC milling machines, boring machines, surface grinders, gantry milling machines and other machine tools

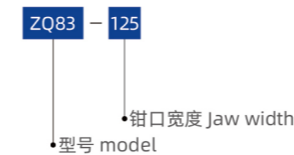


## ZY-00006-II ZQ83型单、双向组合平口钳 SINGLE&amp;DOUBLE ACTION VISES



型号 Model	S (mm)	B (mm)	H (mm)	L (mm)
ZQ83100	290	100	30	460
ZQ83125	320	125	40	520
ZQ83150	360	150	50	580
ZQ83150A	460			680
ZQ83175	400	175	60	666
ZQ83175A	500			766
ZQ83175B	600			866
ZQ83175C	700			966
ZQ83200	500	200	65	805
ZQ83200A	600			905
ZQ83200B	700			1005
ZQ83200C	800			1105
ZQ83200D	900			1205

## 规格说明:



## 配件 Accessories



## 特点:

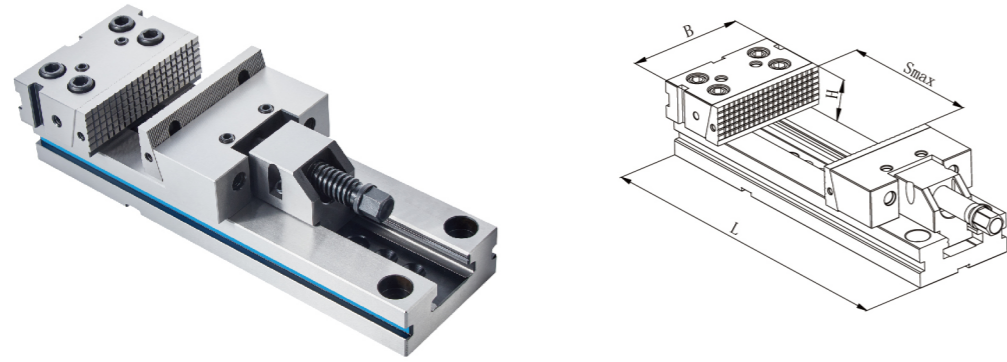
- ◎ 优质合金钢经特殊处理，工作表面硬度达HRC58~62，具有高耐磨性及高抗拉强度
- ◎ 平行度0.005mm/100mm,垂直度0.005mm
- ◎ 可作单向钳用，也可作双向钳用，作单向钳时具有超长的开口度
- ◎ 用于加工中心、数控铣床、镗床、平面磨床、龙门铣床等机床

## Features:

- ◎ High-quality alloy steel has been specially treated, with a working surface hardness of HRC58~62, high wear resistance and high tensile strength
- ◎ Parallelism 0.005mm/100mm, verticality 0.005mm
- ◎ Can be used as one-way pliers or two-way pliers. When used as one-way pliers, it has an extra long opening
- ◎ Used in machining centers, CNC milling machines, boring machines, surface grinders, gantry milling machines and other machine tools



## ZY-00007 立卧快换精密组合平口钳 VERTICAL AND HORIZONTAL QUICK CHANGE PRECISION VISE



型号 Model	B (mm)	H (mm)	Smax (mm)	L (mm)		
KH-95x100	95	28	100	270		
KH-120x150	120	38	150	345		
KH-145x200	145	48	200	420		
KH-145x300			300	520		
KH-170x200	170	58	200	455		
KH-170x300			300	555		
KH-170x400			400	655		
KH-170x500			500	755		
KH-195x200	195	63	200	495		
KH-195x300			300	595		
KH-195x400			400	695		
KH-195x500			500	795		
KH-195x600	195	63	600	895		
KH-295x200			295	78	200	535
KH-295x300					300	635
KH-295x400					400	735
KH-295x500	500	835				
KH-295x600	295	78	600	935		
KH-295x700			700	1035		
KH-295x800			800	1135		

## 规格说明:



## 特点:

- ◎优质合金钢经特殊处理, 工作表面硬度达HRC58~62, 具有高耐磨性及高抗拉强度
- ◎平行度0.005mm/100mm, 垂直度0.005mm
- ◎立、卧两用, 钳口可快速更换
- ◎用于加工中心、数控铣床、镗床、平面磨床、龙门铣床等机床

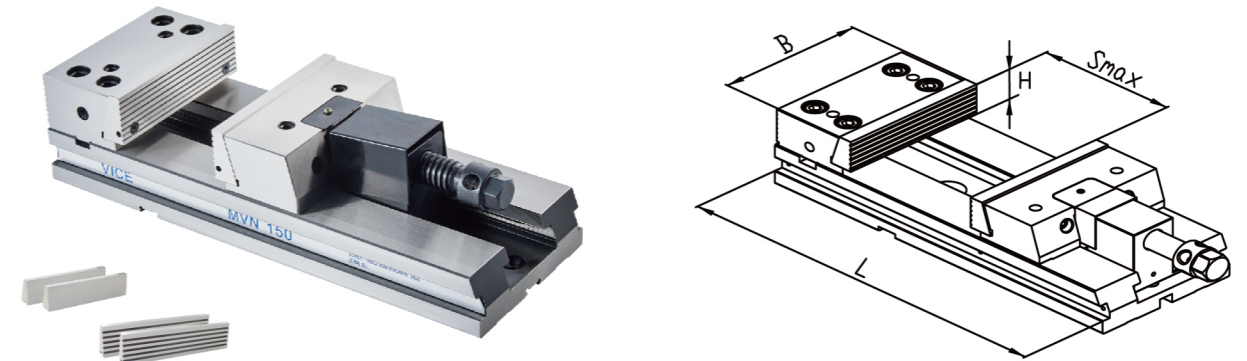
## Features:

- ◎High-quality alloy steel has been specially treated with a working surface hardness of HRC58~62, high wear resistance and high tensile strength
- ◎Parallelism 0.005mm/100mm, verticality 0.005mm
- ◎Vertical and horizontal use, Jaws can be quickly replaced
- ◎Used in machining centers, CNC milling machines, boring machines, surface grinders, gantry milling machines and other machine tools

配件 Accessories				
定位挡板 work stop with main bolt	L型扳手 box wrench	压块 vise holding clamp	T型扳手 T-wrench	定位键 position key block
X1	X1	X4	X1	X2

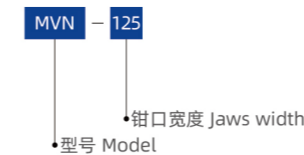


## ZY-00008 MVN型精密快动平口钳 MVN TYPE PRECISION QUICK MOVE VISE



型号 Model	B (mm)	H (mm)	Smax (mm)	L (mm)
MVN125	124	40	140	323
MVN150	149	52	210	423
MVN175	174	58	240	470
MVN200	199	66	270	520
MVN250	249	74	340	600

## 规格说明:



## 特点:

- ◎优质合金钢经特殊处理, 工作表面硬度达HRC58~62, 具有高耐磨性及高抗拉强度
- ◎平行度0.01mm/100mm, 垂直度0.01mm
- ◎该结构操作简单, 方便, 夹紧快
- ◎广泛用于加工中心等精密机床

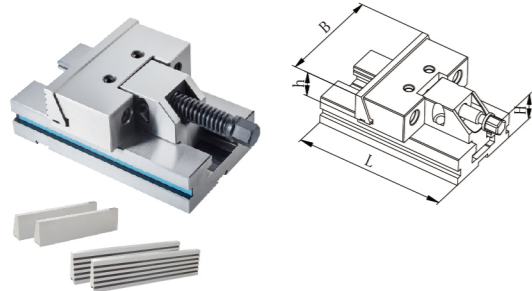
## Features:

- ◎High quality alloy steel with special treatment, the hardness of the working surface reaches HRC58~62, with high wear resistance and high tensile strength
- ◎Parallelism 0.01mm/100mm, perpendicularity 0.01mm
- ◎The structure is simple, convenient and fast clamping
- ◎Widely used in machining centers and other precision machine tools

配件 Accessories					
定位挡板 work stop with main bolt	扳手 box wrench	燕尾螺钉 Dovetail Screws	T型扳手 Eyebolts	定位键 position key block	止动块 stop-moving block
X1	X1	X3	X1	X2	X1



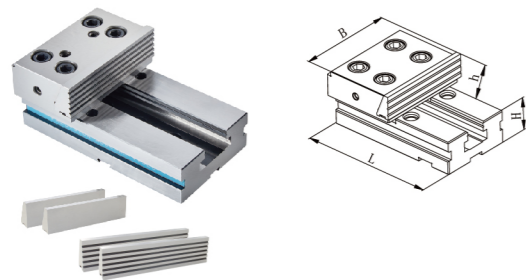
## ZY-00009 ZQ84型分离式组合平口钳 SEPARATE MODULAR VISE



ZQ84-I 动钳组件 MOVABLE JAW SECTION

型号 Model	L (mm)	B (mm)	H (mm)	h (mm)
ZQ84100 - I	140	100	35	30
ZQ84125 - I	160	125	40	40
ZQ84150 - I	230	150	50	50
ZQ84175 - I	240	175	58	60
ZQ84200 - I	300	200	70	65

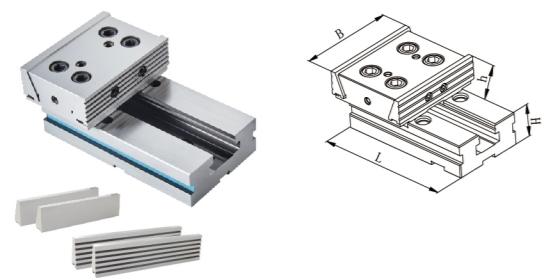
配件 Accessories			
X1	X4	X1	X2
L型扳手 box wrench	压块 vise holding clamp	T型扳手 T-wrench	定位键 position key block



ZQ84-II 定钳组件 FLXED JAW SECTION

型号 Model	L (mm)	B (mm)	H (mm)	h (mm)
ZQ84100 - II	140	100	35	30
ZQ84125 - II	160	125	40	40
ZQ84150 - II	230	150	50	50
ZQ84175 - II	240	175	58	60
ZQ84200 - II	300	200	70	65

配件 Accessories			
X1	X4	X1	X2
定位挡板 work stop with main bolt	压块 vise holding clamp	T型扳手 T-wrench	定位键 position key block



ZQ84-III双向定钳组件 DOUBLE FLXED JAW SECTION

型号 Model	L (mm)	B (mm)	H (mm)	h (mm)
ZQ84100 - III	140	100	35	30
ZQ84125 - III	160	125	40	40
ZQ84150 - III	230	150	50	50
ZQ84175 - III	240	175	58	60
ZQ84200 - III	300	200	70	65

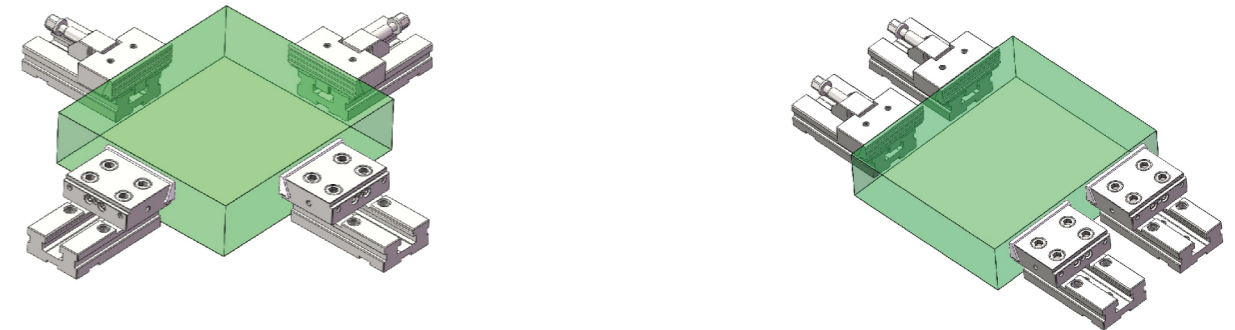
配件 Accessories			
X1	X4	X1	X2
定位挡板 work stop with main bolt	压块 vise holding clamp	T型扳手 T-wrench	定位键 position key block

## 特点:

- ◎工作面硬度HRC58~62
- ◎平行度0.005mm/100mm, 垂直度0.005mm
- ◎可在工作台上组装成单向或双向夹紧方式, 满足加工尺寸较大工件的需要
- ◎广泛用于加工中心、数控铣床、镗床、铣床、磨床等机床

## Features:

- ◎Working surface hardness HRC58~62
- ◎Parallelness 0.005mm/100mm, verticality 0.005mm
- ◎Can be assembled on the workbench into one-way or two-way clamping to meet the needs of processing larger workpieces
- ◎Widely used in machining centers, CNC milling machines, boring machines, milling machines, grinders and other machine tools



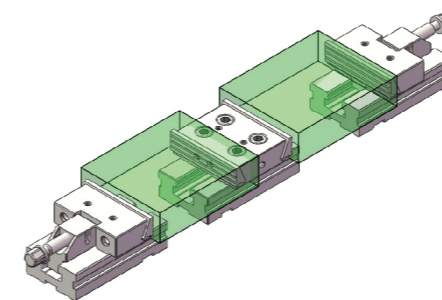
四件动、定钳组件, 将较大工件压紧于工作台上



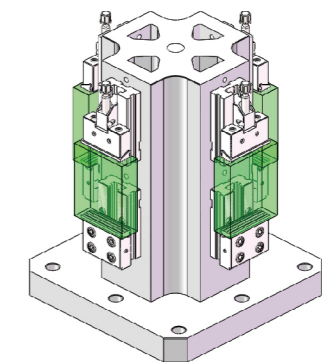
动钳组件与定钳组件配合使用, 将工件压紧于钳体面上



动钳组件与标准钳配合使用



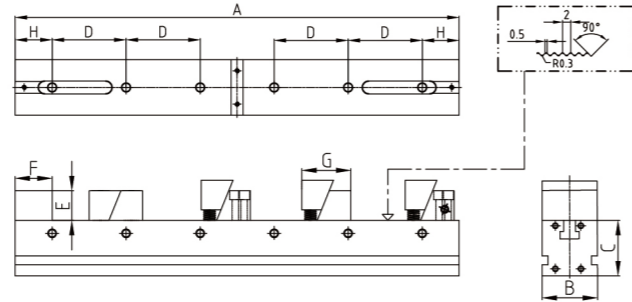
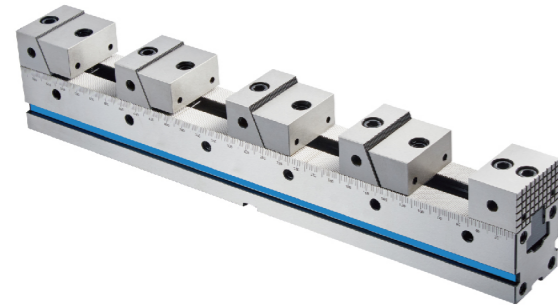
动钳口组件与双向定钳口组件配合使用



定动钳组件与方箱配合使用。

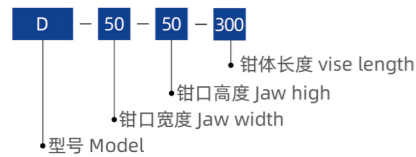


ZY-00010 多工位平口钳 MULTIFLEX MODULAR VISE



规格 Model	A	B	C	D	E	F	G	H
D50x50x300	300	50	50	100	25	38	55/58	50
D50x50x400	400							
D50x50x500	500							
D50x50x600	600							
D50x50x700	700							
D75x75x400	400	75	75	100	40	50	70/75	50
D75x75x500	500							
D75x75x600	600							
D75x75x700	700							
D75x75x800	800							
D75x75x900	900							
D100x100x700	700	100	100	100	60	70	94/98	50
D100x100x800	800							
D100x100x900	900							
D100x100x1000	1000							

规格说明:



特点:

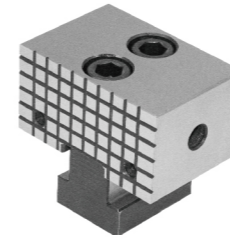
- ◎工作表面硬度达HRC58-62,具有高耐磨性及高抗拉强度
- ◎平行度0.01mm/100mm,垂直度0.01mm/100mm
- ◎一次装夹多个相同或不同的工件
- ◎齿型底座可以根据加工产品大小自由调整
- ◎多工位虎钳的重复使用频率高,可降低夹具的设计制造成本,工件加紧时不打滑,操作简单

Features:

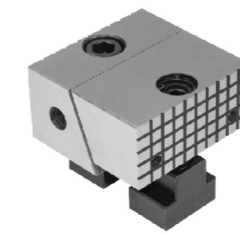
- ◎Working surface hardness of HRC58-62, Has high wear resistance and high tensile strength
- ◎Parallelness 0.01mm/100mm, verticality 0.01mm/100mm
- ◎Clamp multiple identical or different workpieces at one time
- ◎The tooth base can be freely adjusted according to the size of the processed product
- ◎The multi-station vise has high reuse frequency, which can reduce the design and manufacturing cost of the fixture. The workpiece does not slip when tightened and is easy to operate



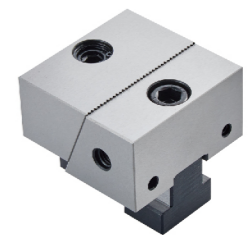
ZY-00010-1 定钳口  
Fixed jaw



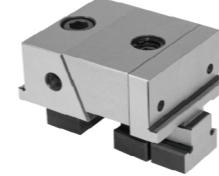
ZY-00010-2 槽面定动钳口组件  
Fixed and movable serrated jaw



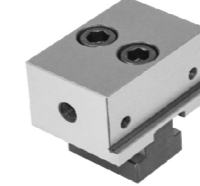
ZY-00010-3 光面定动钳口组件  
Fixed and movable smooth jaw



ZY-00010-4 台阶定动钳口组件  
Fix step jaw



ZY-00010-5 台阶定钳口  
Fixed step jaw



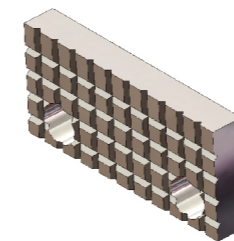
ZY-00010-6 双向动钳口  
Clamping movable jaw



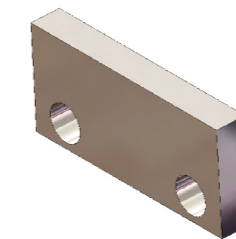
ZY-00010-7 超宽动钳口  
Jaw with bigger position wedge



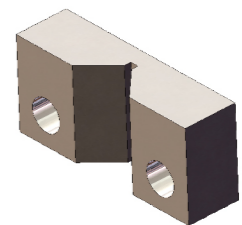
ZY-00010-8 槽面钳口  
serrated jaw plate



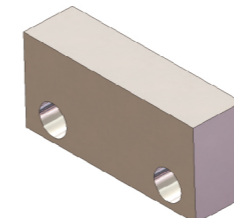
ZY-00010-9 光面钳口  
Smoothjaw plate



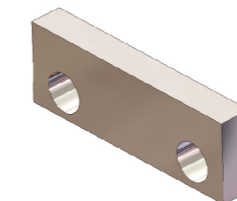
ZY-00010-10 V型钳口  
Prismatic jaw plate



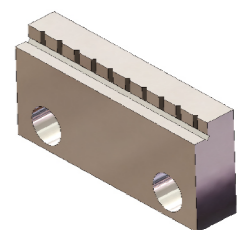
ZY-00010-11 软钳口  
Soft jaw plate



ZY-00010-12 台阶钳口  
Parallel jaw plate

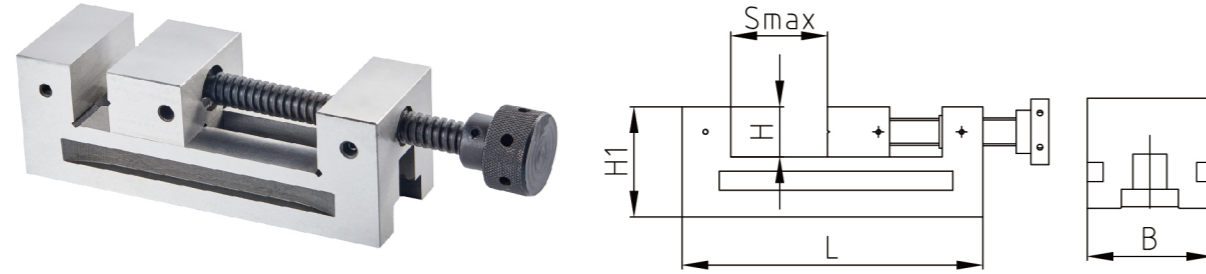


ZY-00010-13 齿状钳口  
Grip jaw plate



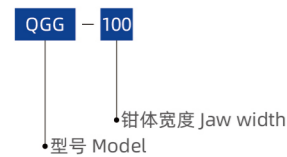


## ■ ZY-00011 QGG系列精密工具平口钳 QGG SERIES PRECISION VISE



规格 Model	B (mm)	H (mm)	H1 (mm)	Smax (mm)	L (mm)
QGG50	50	25	50	65	155
QGG60	60	25	50	55	110
QGG63	63	32	65	85	190
QGG73	73	35	74	100	210
QGG80	80	40	84	100	220
QGG88	88	40	88	125	250
QGG100	100	45	95	125	260
QGG125	125	50	110	160	300
QGG125A	125	50	110	210	350
QGG150	150	50	110	175	315

## 规格说明:



## 特点:

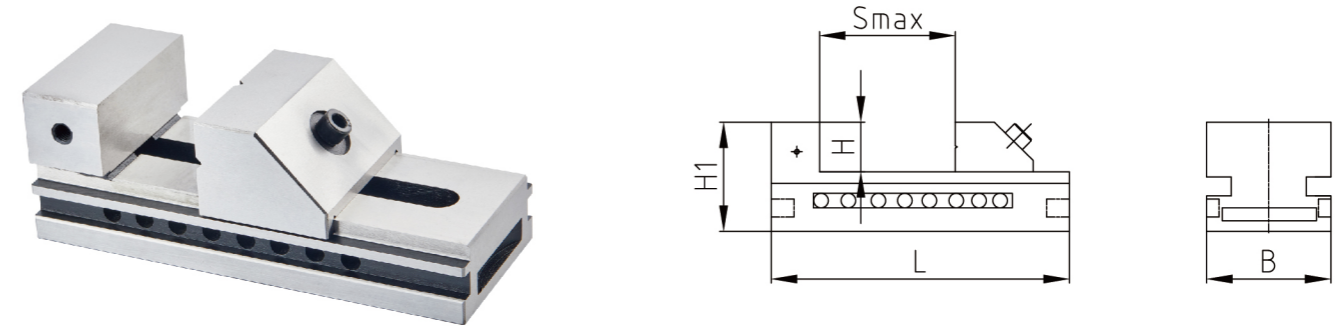
- ◎采用优质合金钢渗碳处理，工作面硬度HRC58~62
- ◎平行度0.005mm/100mm，垂直度0.005mm
- ◎夹紧快，操作灵活
- ◎用于精密测量和检查，精密磨削及电火花
- ◎在工作时无论横立、竖立、平放皆可保持高的精密度

## Features:

- ◎The use of high-quality alloy steel carburizing treatment, the hardness of the working surface HRC58~62
- ◎Parallelism 0.005mm/100mm, perpendicularity 0.005mm
- ◎Fast clamping and flexible operation
- ◎Used for precision measurement and inspection, precision grinding and EDM
- ◎High density can be maintained when working horizontally, vertically or flatly

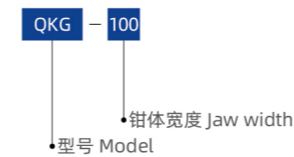


## ■ ZY-00012 QKG系列精密工具平口钳 QKG SERIES PRECISION VISE



规格 Model	B (mm)	H (mm)	H1 (mm)	Smax (mm)	L (mm)
QKG25	26	9.15	29	22	65.4
QKG36	36	20	45	40	100
QKG38	38	20	45	44	105
QKG50	50	25	50	65	140
QKG63	63	32	63	85	175
QKG73	73	35	67	100	190
QKG80	80	40	80	100	200
QKG88	88	40	85	125	235
QKG100	100	45	90	125	245
QKG125	125	50	100	160	285
QKG150	150	50	100	200	330
QKG150A	150	50	100	250	380
QKG150B	150	50	100	300	430

## 规格说明:



## 特点:

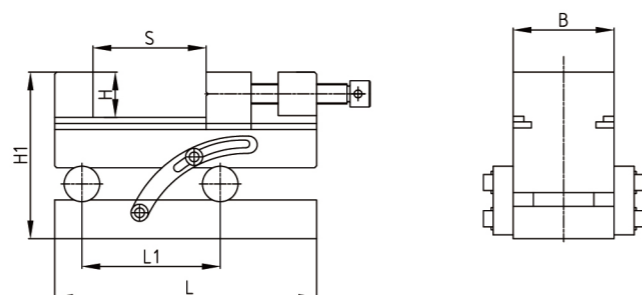
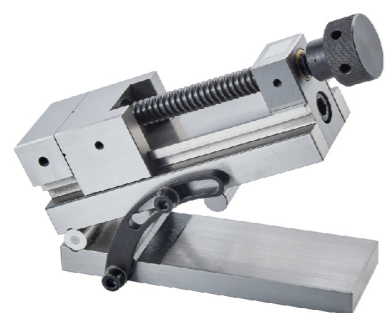
- ◎采用优质合金钢渗碳处理，工作面硬度HRC58~62
- ◎平行度0.005mm/100mm，垂直度0.005mm
- ◎夹紧快，操作灵活
- ◎用于精密测量和检查，精密磨削及电火花
- ◎在工作时无论横立、竖立、平放皆可保持高的精密度

## Features:

- ◎The use of high-quality alloy steel carburizing treatment, the hardness of the working surface HRC58~62
- ◎Parallelism 0.005mm/100mm, perpendicularity 0.005mm
- ◎Fast clamping and flexible operation
- ◎Used for precision measurement and inspection, precision grinding and EDM
- ◎High density can be maintained when working horizontally, vertically or flatly

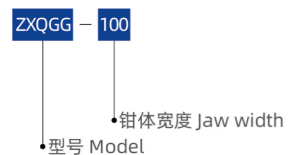


## ZY-00013 ZXQGG系列精密正弦平口钳 ZXQGG SERIES PRECISION SINE VISE



型号 Model	B (mm)	H (mm)	H1(mm)	Smax (mm)	L (mm)	L1		调整角度范围 (Adjustable angle range)
						(mm)	(in)	
ZXQGG50	50	25	86.6	60	140	100	4"	0~45°
ZXQGG63	63	32	94.6	85	175			
ZXQGG73	73	35	111	90	190			
ZXQGG80	80	40	121	95	200			
ZXQGG88	88	40	125	120	235			
ZXQGG100	100	45	139.2	125	245	200	10"	0~45°
ZXQGG125	125	50	154.2	160	285			
ZXQGG150	150	50	160.9	190	330			

## 规格说明:



## 特点:

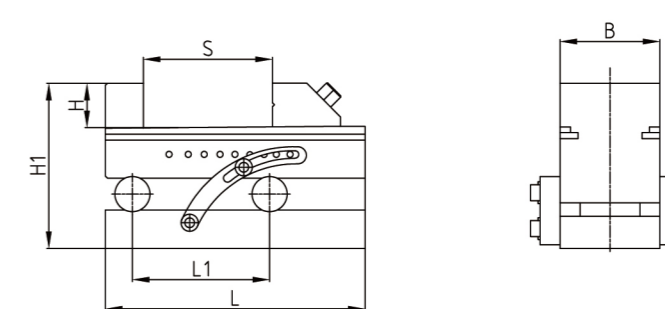
- ◎ 优质合金钢经特殊处理后耐磨性高，不易变形
- ◎ 平行度0.005mm/100mm，垂直度0.005mm
- ◎ 利用正弦原理，可加工出高精度的角度面
- ◎ 回转角度范围0-45度

## Features:

- ◎ High-quality alloy steel with special treatment has high abrasion resistance and is not easy to be deformed
- ◎ Parallelism 0.005mm/100mm, perpendicularity 0.005mm
- ◎ Utilizing the sine principle, it can process the angle surface with high precision
- ◎ The range of rotary angle is 0-45 degrees

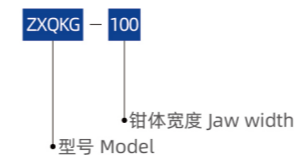


## ZY-00014 ZXQKG系列精密正弦平口钳 ZXQKG SERIES PRECISION SINE VISE



型号 Model	B (mm)	H (mm)	H1(mm)	Smax (mm)	L (mm)	L1		调整角度范围 (Adjustable angle range)
						(mm)	(in)	
ZXQKG50	50	25	79.36	65	140	100	4"	0~45°
ZXQKG63	63	32	92.36	85	175			
ZXQKG73	73	35	104	100	190			
ZXQKG80	80	40	117	100	200			
ZXQKG88	88	40	122	125	235			
ZXQKG100	100	45	134.08	125	245	200	10"	0~45°
ZXQKG125	125	50	144.08	160	285			
ZXQKG150	150	50	150.9	200	330			

## 规格说明:



## 特点:

- ◎ 优质合金钢经特殊处理后耐磨性高，不易变形
- ◎ 平行度0.005mm/100mm，垂直度0.005mm
- ◎ 利用正弦原理，可加工出高精度的角度面
- ◎ 回转角度范围0-45度
- ◎ 适用于铣床，钻床，磨床等机床

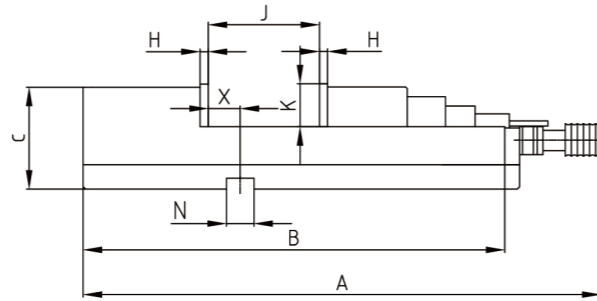
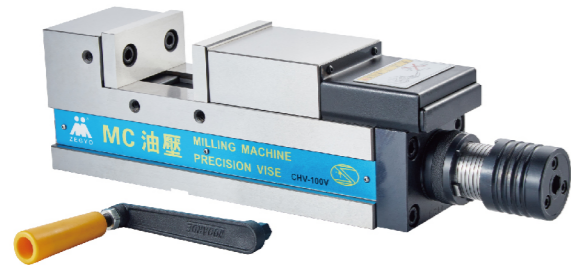
## Features:

- ◎ High-quality alloy steel has high wear resistance and is not easy to deform after special treatment
- ◎ Parallelism 0.005mm/100mm, perpendicularity 0.005mm
- ◎ Using the sine principle, high-precision angular surfaces can be processed★: Rotation angle range 0-45 degrees
- ◎ Suitable for milling machines, drilling machines, grinders and other machine tools



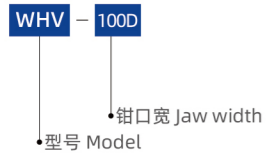


## ZY-00015 精密油压虎钳 PRECISION HYDRAULIC VISE



型号 Model	A (mm)	B (mm)	C (mm)	J (mm)	K (mm)	N (mm)	X (mm)	H (mm)
WHV-100D	475	340	133	0-125	48	16	45	15
WHV-130D	540	405	150	0-180	55	18	65	15
WHV-160D	630	495	163	0-240	58	18	65	15
WHV-200D	705	570	173	0-280	63	18	82	18

## 规格说明:



## 特点:

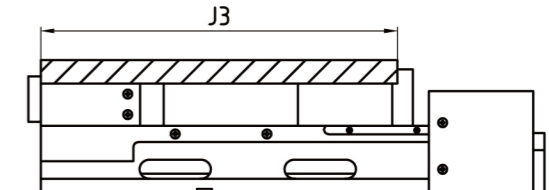
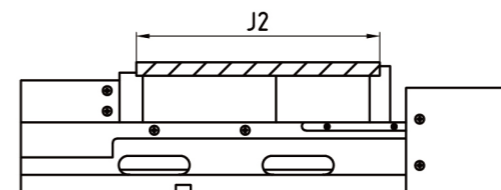
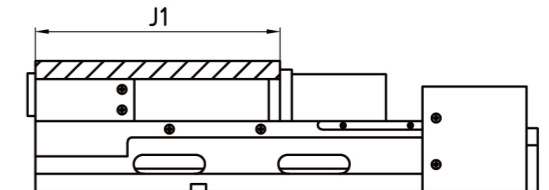
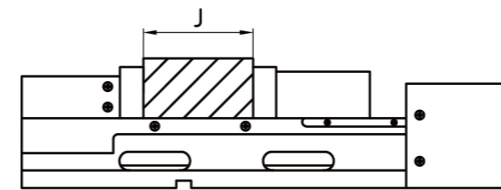
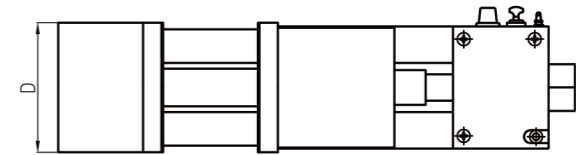
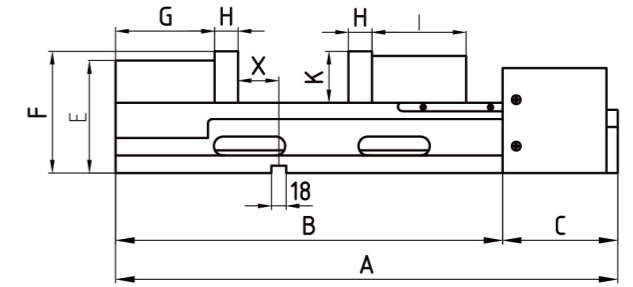
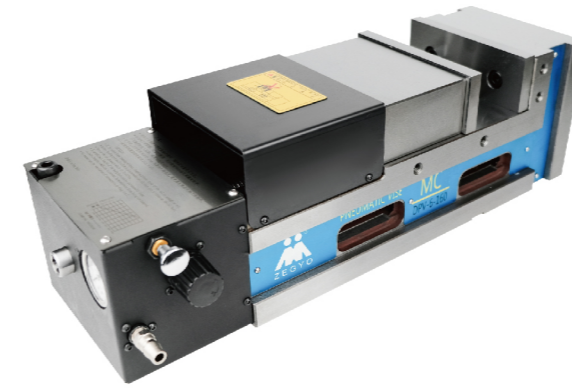
- ◎角固式半圆球可产生角固下锁之力,可消除钳口上浮和工件倾斜
- ◎精密的油压倍力设计, 操作方便, 适合做轻重切削使用
- ◎强而有力材质~虎钳钳身使用高抗张拉力球状石墨化铸铁(FCD60~60kgs/mm)(80,000psi)抗张力强, 不易变形。本体和固定虎口为一体成形, 夹持工件时可降低固定虎口向后倾斜

## Features:

- ◎The angle-locked semi-circular ball can generate an angle-locked locking force to eliminate jaw floating and workpiece tilting.
- ◎Precision hydraulic multi-power design, easy to operate, suitable for light and heavy cutting.
- ◎Strong and powerful material~The vise body is made of high-tensile spherical graphitized cast iron (FCD60~60kgs/mm) (80,000psi), which has strong tensile strength and is not easy to deform. The main body and the fixed tiger's mouth are formed in one piece, and the fixed tiger's mouth can be lowered and tilted backward when clamping the workpiece



## ZY-00016 气动油压精密快速虎钳 PNEUMATIC HYDRAULIC PRECISION FAST VISE



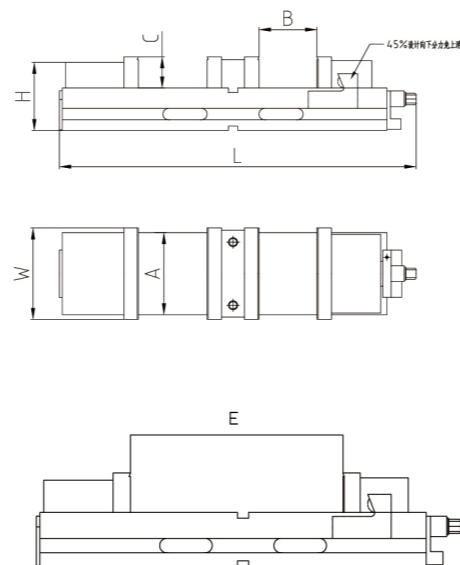
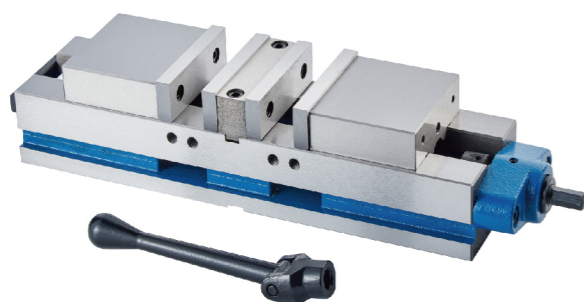
规格 Model	A (mm)	B (mm)	C (mm)	D (mm)	E (mm)	F (mm)	G (mm)	H (mm)	I (mm)	J (mm)	J1 (mm)	J2 (mm)	J3 (mm)	K (mm)	X (mm)	夹紧力 (Clamping force)
FPV-130D	525	400	125	130	157	160	85	15	125	0-150	95-250	125-285	210-370	455	45	6000
FPV-160D	545	420	125	160	160	163	85	15	138	0-160	95-260	140-305	225-390	58	45	6000
FPV-160DL	635	510	125	160	160	163	85	15	138	0-250	95-350	140-395	225-495	58	89	6000
FPV-160DXL	665	540	125	160	160	163	85	19	115	0-300	95-380	140-425	225-525	58	89	6000
FPV-200D	735	610	125	200	187	190	100	19	115	0-350	100-470	116-465	216-585	70	71	6000

## 特点:

- ◎内藏防止上浮传动机构
- ◎采用高抗张拉力球状石墨化铸铁, 抗张力强, 不易变形
- ◎夹持力可从0-6000kg可由调整器自由调整, 开关速度只需1.5秒
- ◎夹持安全距离可从6mm自动寻找最高空压源: 当铜铝类产品轻加工铸铁类初胚重切削时, 用调整器调整所需压力, 有保压及稳压功能
- ◎可与CNC系统信号对接, 控制气动油压虎钳自动松夹紧, 实现全自动装夹

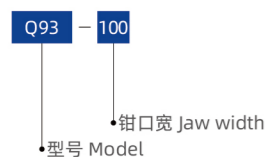
## Features:

- ◎Built-in transmission mechanism to prevent floating
- ◎Using high tensile strength spherical graphitized cast iron, which has strong tensile strength and is not easy to deform
- ◎The clamping force can be freely adjusted from 0-6000kg by the adjuster, and the switching speed only takes 1.5 seconds
- ◎The clamping safety distance can automatically find the highest air pressure source from 6mm: When copper and aluminum products are lightly processed and cast iron preliminary blanks are cut heavily, the regulator is used to adjust the required pressure. It has pressure maintaining and stabilizing functions to ensure that the workpiece is clamped
- ◎Can be connected with CNC system signals to control the automatic loosening and tightening of pneumatic and hydraulic vise to achieve fully automatic clamping


**ZY-00017 Q93系列双工位精密机用虎钳** Q93 SERIES DOUBLE-STATION VISE


型号 Model	A (mm)	B (mm)	C (mm)	L (mm)	W (mm)	H (mm)	E (mm)
Q93100	100	70	35	460	101	95	207
Q93160	160	90	50	612	161	130	256

## 规格说明:

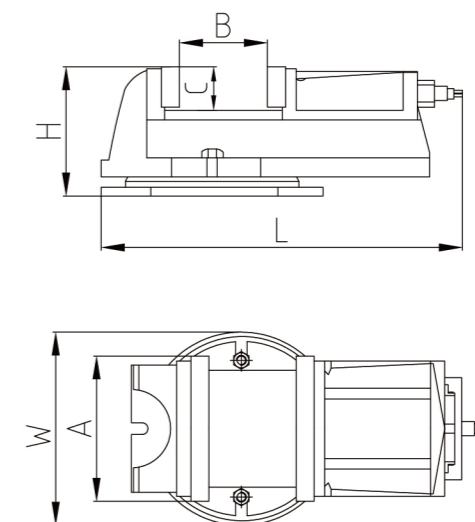


## 特点:

- ◎适用于数控铣床、加工中心
- ◎双工位夹持结构，两夹持面可夹持大小不同的工件，Q93100两工件差30MM，Q93160两工件可差45MM
- ◎采用半球结构，夹持工件时有向下45°夹持力，确保工件不上浮
- ◎拆掉固定口可作为精密自定心钳用
- ◎拥有角固定式虎钳的精度

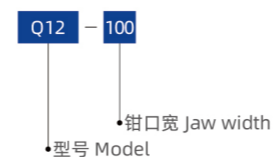
## Features:

- ◎Suitable for CNC milling machines and machining centers
- ◎Dual-station clamping structure, the two clamping surfaces can clamp workpieces of different sizes. The difference between the two workpieces of Q93100 is 30MM, and the difference between the two workpieces of Q93160 is 45MM
- ◎It adopts a hemispherical ball structure and has a downward 45° clamping force when clamping the workpiece to ensure that the workpiece does not float up.
- ◎Remove the fixed opening and use it as a precision self-centering plier
- ◎It has the precision of an angle-fixed vise


**ZY-00018 Q12 (QH) 系列机用虎钳** Q12(QH)SERIES VISE


型号 Model	A (mm)	B (mm)	C (mm)	L (mm)	W (mm)	H (mm)
Q1280	80	63	32	220	115	91
Q12100	100	80	35	260	140	105
Q12125	125	100	40	301	160	122
Q12160	160	125	52	411	222	158
Q12200	200	160	63	461	240	175

## 规格说明:



## 特点:

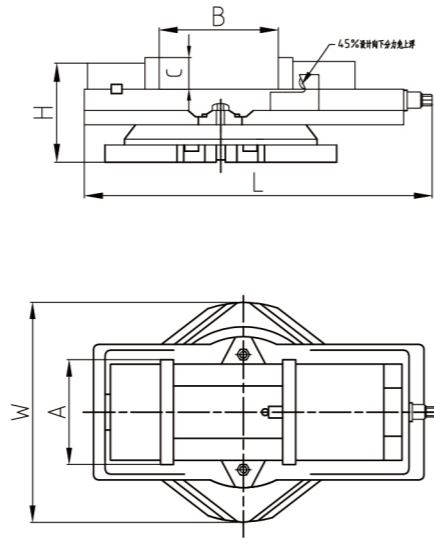
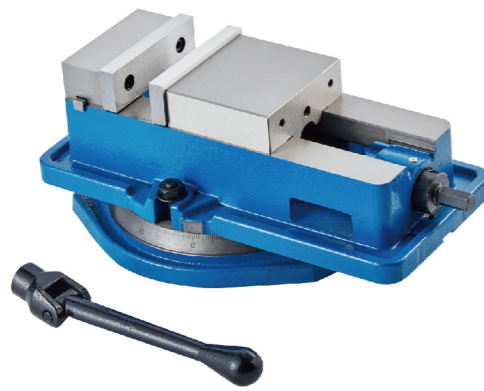
- ◎适用于铣床重加工
- ◎强度高，丝杆导轨不易进脏，可水平360度旋转

## Features:

- ◎Suitable for reprocessing on milling machines
- ◎High strength, the screw guide rail is not easy to get dirty, and can rotate 360 degrees horizontally

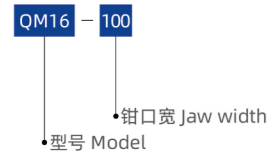


## ZY-00019 QM16系列角固式虎钳 QM16 SERIES ANGLE FIXED VISE



型号 Model	A (mm)	B (mm)	C (mm)	L (mm)	W (mm)	H (mm)
QM1660	54	66	19	200	124	76
QM1680	81	77	24	250	164	94
QM16100	101	116	32	328	204	120
QM16125	129	148	40	376	238	133
QM16160	160	160	45	432	278	147
QM16160L	160	200	45	475	278	147
QM16200	201	210	50	530	320	166
QM16200L	201	300	50	594	320	166
QM16200L	201	348	50	664	320	166

## 规格说明:



## 特点:

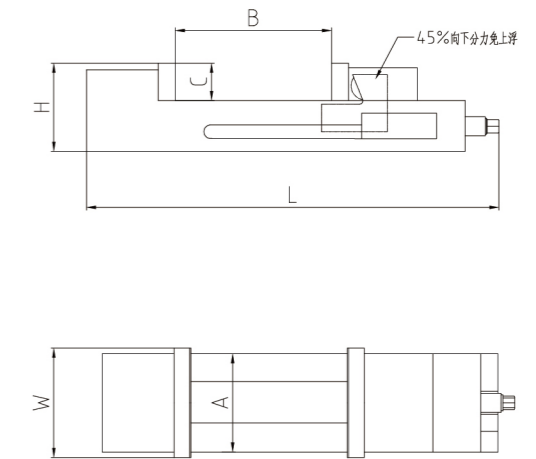
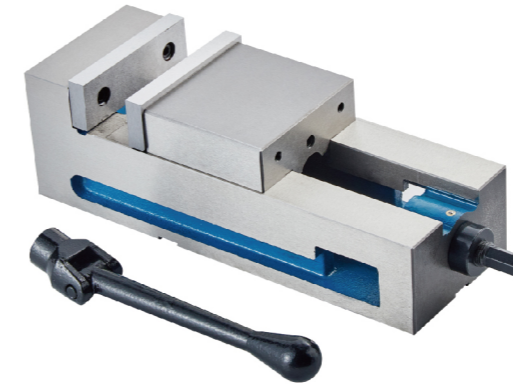
- ◎适用于普通铣床、数控铣床、加工中心
- ◎QM角固式虎钳为较经济型的虎钳
- ◎定钳与钳身的垂直度、平行度在0.025mm/100mm内
- ◎采用半球球结构，夹持工件时有向下45°夹持力，确保工件不上浮
- ◎底座有度数刻度，可水平360度旋转
- ◎丝杆固定端采用推力轴承，减少摩擦且夹紧力大

## Features:

- ◎Suitable for ordinary milling machines, CNC milling machines, and machining centers. 2. QM angle-fixed vise is a more economical vise
- ◎The verticality and parallelism between the fixed clamp and the clamp body are within 0.025MM/100MM
- ◎It adopts a hemispherical ball structure and has a downward 45° clamping force when clamping the workpiece to ensure that the workpiece does not float up
- ◎The base has a degree scale and can rotate 360 degrees horizontal
- ◎The fixed end of the screw rod adopts thrust bearing to reduce friction and increase the clamping force

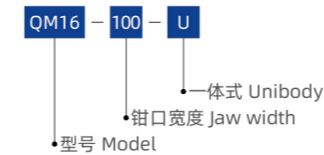


## ZY-00020 QM16系列一体式虎钳 QM16 SERIES UNIBODY VISE



规格 Model	A (mm)	B (mm)	C (mm)	L (mm)	W (mm)	H (mm)
QM16100U	100	135	32	325	101	94
QM16150U	150	158	45	415	151	122
QM16200U	197	220	50	503	198	142

## 规格说明:



## 特点:

- ◎适用于数控铣床、加工中心、磨床
- ◎拥有角固式虎钳的精度
- ◎采用半球球结构，夹持工件时有向下45°夹持力，确保工件不上浮
- ◎夹持工件动态变量小

## Features:

- ◎Suitable for CNC milling machines, machining centers, and grinders
- ◎Has the precision of an angle-fixed vise
- ◎It adopts a hemispherical ball structure and has a downward 45° clamping force when clamping the workpiece to ensure that the workpiece does not float up
- ◎The dynamic variables of clamping the workpiece are small